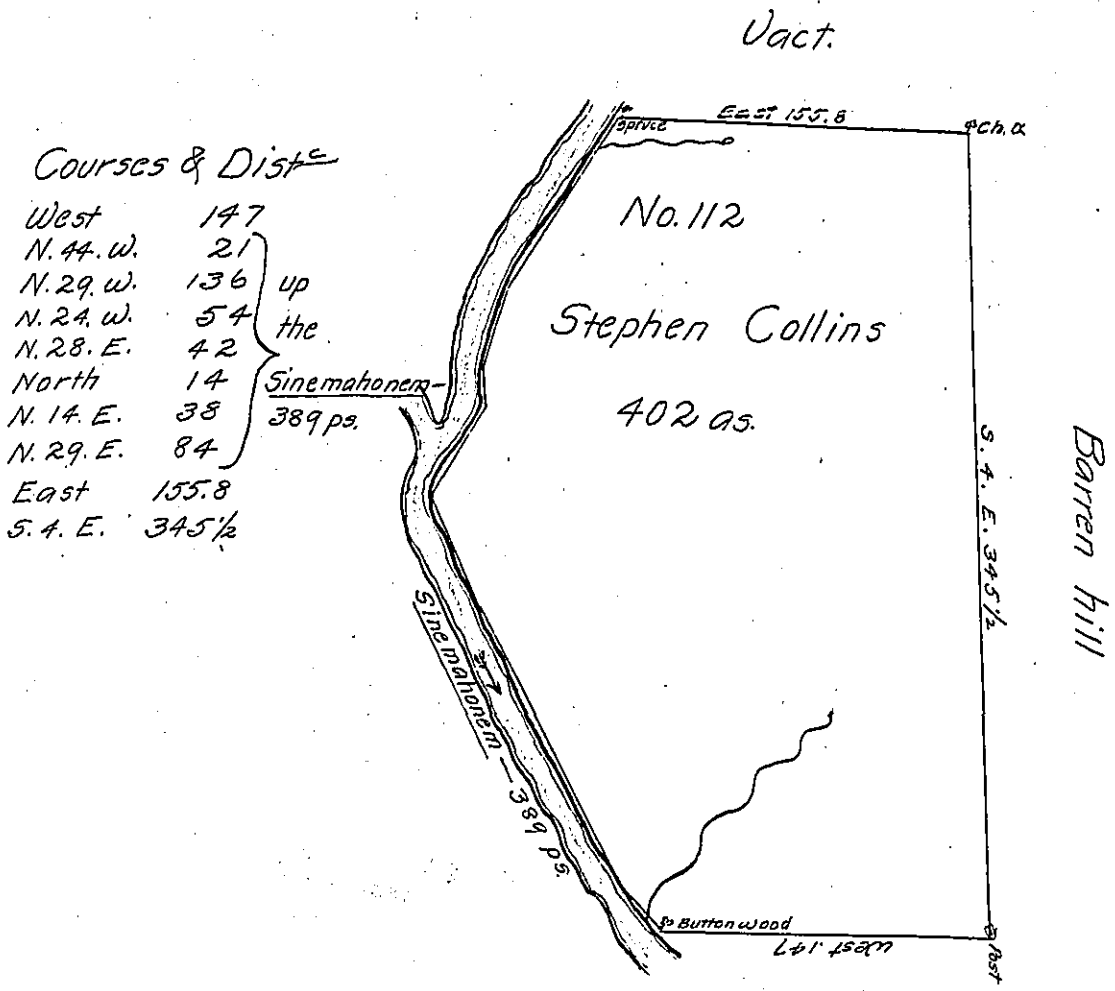


I have compared the above with the original field notes & find them to be accurate  
John Canan D.S.



Courses & Dist<sup>ce</sup>

|           |         |   |
|-----------|---------|---|
| West      | 147     |   |
| N. 44. W. | 21      | } up<br>the<br>Sinemahonem -<br>389 ps. |
| N. 29. W. | 136     |   |
| N. 24. W. | 54      |   |
| N. 28. E. | 42      |   |
| North     | 14      |   |
| N. 14. E. | 38      |   |
| N. 29. E. | 84      |   |
| East      | 155.8   |   |
| S. 4. E.  | 345 1/2 |   |

*Draught of a tract of land situate on Sinemahonem in the late purchase Northumberland County containing four hundred & two acres & allow<sup>ce</sup> of six pr. Cent. Surveyed for Stephen Collins, in pursuance of a Warrant No. 112 Dated May 17th. 1785 - Surveyed June 26th. 1786 -*

*pr. Jas. Harris D.S.*

*John Lukens Esqr. Suror. Genl.*

IN TESTIMONY that the above is a copy of the original remaining on file in the Department of Internal Affairs of Pennsylvania, made conformably to an Act of Assembly approved the 16th day of February, 1833, I have hereunto set my Hand and caused the Seal of said Department to be affixed at Harrisburg, this twenty-third day of September 1904

*James O. Pitzer*  
Secretary of Internal Affairs.